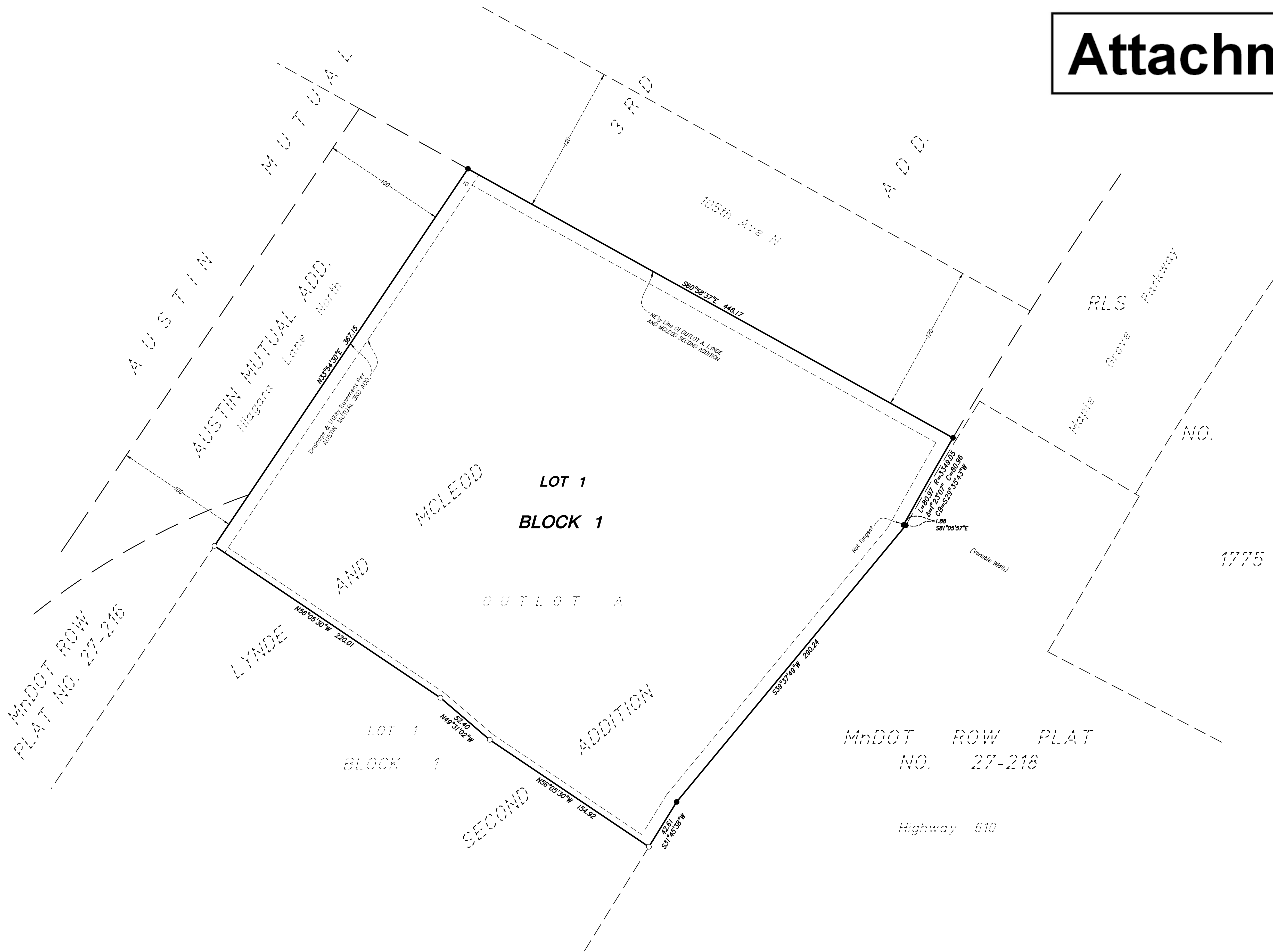


MSP MG ADDITION

R.T. DOC. NO. _____

Attachment B



BEARINGS ARE BASED ON THE NE'LY LINE OF OUTLOT A, LYNDE AND MCLEOD SECOND ADDITION ASSUMED TO HAVE A BEARING OF SOUTH 60°58'37" EAST.

- DENOTES 1/2 INCH X 14 INCH IRON MONUMENT SET, MARKED "LS 54850"
- DENOTES FOUND 1/2 INCH IRON MONUMENT, CAPPED "LS 17255", UNLESS OTHERWISE NOTED

DRAINAGE AND UTILITY EASEMENTS ARE SHOWN THUS: (NOT TO SCALE)

