

SOUTHWEST CROSSROADS NINTH ADDITION

Attachment B

C.R. DOC. NO.

KNOW ALL PERSONS BY THESE PRESENTS: That Soto Shine Maple Grove, LLC, a Minnesota limited liability company, fee owner of the following described property:

OUTLOT G and OUTLOT H, SOUTHWEST CROSSROADS

Has caused the same to be surveyed and platted as SOUTHWEST CROSSROADS 9TH ADDITION.

In witness whereof said Soto Shine Maple Grove, LLC, a Minnesota limited liability company, has caused these presents to be signed by its proper officer this _____ day of _____, 20____.

Signed: Soto Shine Maple Grove, LLC, a Minnesota limited liability company

By: _____

Its: _____

By: _____

Name: _____, its _____

STATE OF MINNESOTA

COUNTY OF _____

This instrument was acknowledged before me this _____ day of _____, 2022, by _____ for Soto Shine Maple Grove, LLC, a Minnesota limited liability company, _____ of Soto Shine Maple Grove, LLC, a Minnesota limited liability company, _____ on behalf of the company.

(Signature)

(Name Printed)

Notary Public, _____ County, _____

My Commission Expires _____

I, Chris Ambourn, do hereby certify that this plat was prepared by me or under my direct supervision; that I am a duly Licensed Land Surveyor in the State of Minnesota; that this plat is a correct representation of the boundary survey; that all mathematical data and labels are correctly designated on this plat; that all monuments depicted on this plat have been, or will be correctly set within one year; that all water boundaries and wet lands, as defined in Minnesota Statutes, Section 505.01, Subd. 3, as of the date of this certificate are shown and labeled on this plat; and all public ways are shown and labeled on this plat.

Dated this _____ day of _____, 20____.

Chris Ambourn, Licensed Land Surveyor
Minnesota License No. 43055

STATE OF MINNESOTA

COUNTY OF _____

This instrument was acknowledged before me on this _____ day of _____, 20____, by Chris Ambourn.

(Signature)

(Name Printed)

Notary Public, _____ County, Minnesota

My Commission Expires _____

CITY COUNCIL, CITY OF MAPLE GROVE, MINNESOTA

This plat of ARBOR LAKES 9TH ADDITION was approved and accepted by the City Council of the City of Maple Grove Minnesota, at a regular meeting thereof held this _____ day of _____, 20____, and said plat is in compliance with the provisions of Minnesota Statutes, Section 505.03, Subdivision 2.

CITY COUNCIL, CITY OF MAPLE GROVE, MINNESOTA

By _____ Mayor
By _____ City Clerk

RESIDENT AND REAL ESTATE SERVICES, Hennepin County, Minnesota

I hereby certify that taxes payable in 20____ and prior years have been paid for land described on this plat, dated this _____ day of _____, 20____.

_____, County Auditor

By _____ Deputy

SURVEY DIVISION, Hennepin County, Minnesota

Pursuant to MN. STAT. Sec. 383B.565 (1969) this plat has been approved this _____ day of _____, 20____.

Chris F. Mavis, County Surveyor

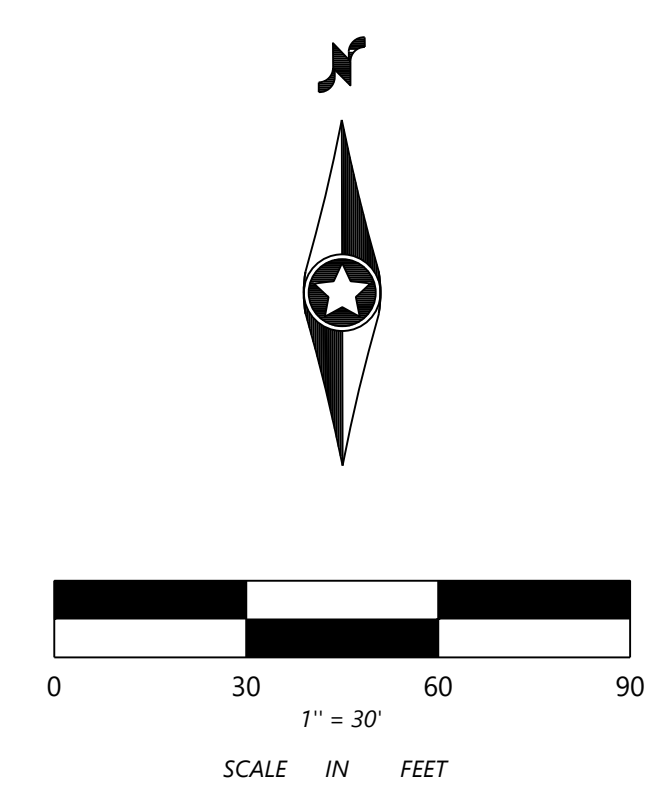
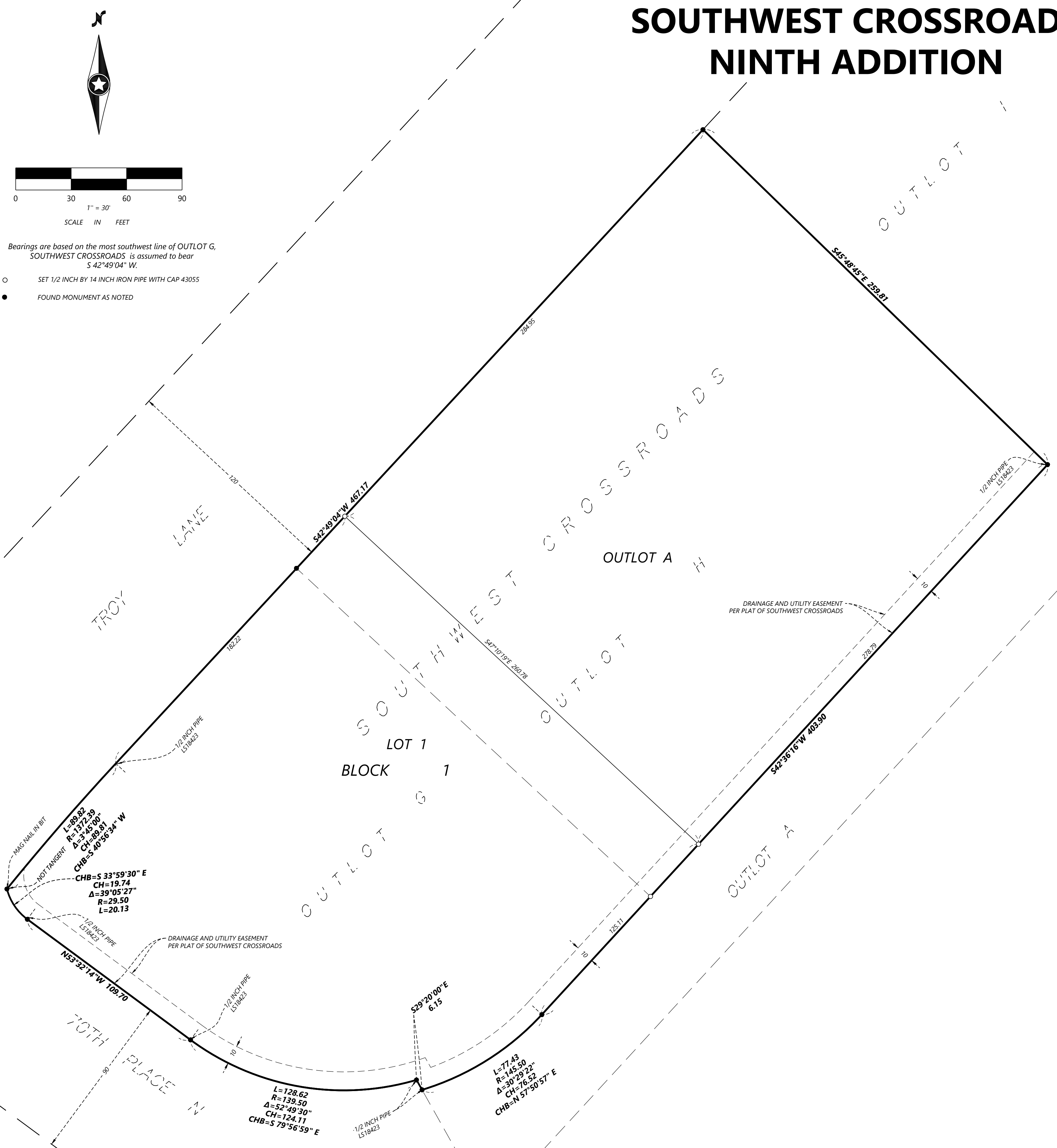
By _____

COUNTY RECORDER, Hennepin County, Minnesota

I hereby certify that the within plat of SOUTHWEST CROSSROADS NINTH ADDITION was recorded in this office this _____ day of _____, 20____, at _____ o'clock _____ M.

Amber Bougie, County Recorder

By _____ Deputy



Bearings are based on the most southwest line of OUTLOT G, SOUTHWEST CROSSROADS. It is assumed to bear S 42°49'04\"/>

- SET 1/2 INCH BY 14 INCH IRON PIPE WITH CAP 43055
- FOUND MONUMENT AS NOTED