

© 2023 Westwood Professional Services, Inc

N:\043826.00\DWG\SURVEY\043826.00-VACATIONS.DWG

77TH AVE NORTH (C.S.A.H 130)

SEC. 25

GOVERNMENT LOT 1

TWP. 119






RNG. 22

N 1/2 OF THE SE 1/4 OF THE NW 1/4

N 1/2 OF THE SW 1/4 OF THE NE 1/4

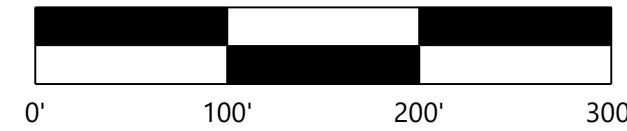
MATCH LINE

LEGEND

-  BOUNDARY LINE
-  RIGHT-OF-WAY LINE
-  LOT LINE
-  EASEMENT LINE
-  SECTION LINE



1" = 100'



- (1) DRAINAGE AND UTILITY EASEMENT PER DOC. NO. 228093 TO BE VACATED
- (2) DRAINAGE AND UTILITY EASEMENT PER DOC. NO. 2098292 TO BE VACATED
- (3) DRAINAGE EASEMENT PER DOC. NO. 1517356 TO BE VACATED
- (4) PUBLIC STREET EASEMENT PER DOC. NO. 2108435 AND 2115065 TO BE VACATED
- (5) RIGHT OF WAY TO BE VACATED
- (6) PUBLIC RIGHT OF WAY EASEMENT PER DOC. NO. 5644929 AND 2089023 TO BE VACATED

VACATIONS

- (1) DRAINAGE AND UTILITY EASEMENT PER DOC. NO. 228093
- (2) DRAINAGE AND UTILITY EASEMENT PER DOC. NO. 2098292
- (3) DRAINAGE EASEMENT PER DOC. NO. 1517356
- (4) PUBLIC STREET EASEMENT PER DOC. NO. 2108435 AND 2115065
- (5) PILGRIM LANE RIGHT OF WAY
- (6) PUBLIC RIGHT OF WAY EASEMENT PER DOC. NO. 5644929 AND 2089023
- (7) DRAINAGE AND UTILITY EASEMENT PER DOC. NO. 2031332
- (8) 20' DRAINAGE AND UTILITY EASEMENT PER DOC. NO. 1730121, TO BE VACATED
- (9) 10' PUBLIC STREET EASEMENT PER DOC. NO. 1730121, TO BE VACATED
- (10) INTERSTATE SERVICE DRIVE RIGHT OF WAY

DESIGNED: _____
 CHECKED: M/JW
 DRAWN: ACW
 HORIZONTAL SCALE: 100'
 VERTICAL SCALE: _____

INITIAL ISSUE: _____
 REVISIONS: _____

PREPARED FOR:
RYAN COMPANIES US, INC.
 MINNEAPOLIS, MN

C.S. MCCROSSAN SITE
 MAPLE GROVE, MN

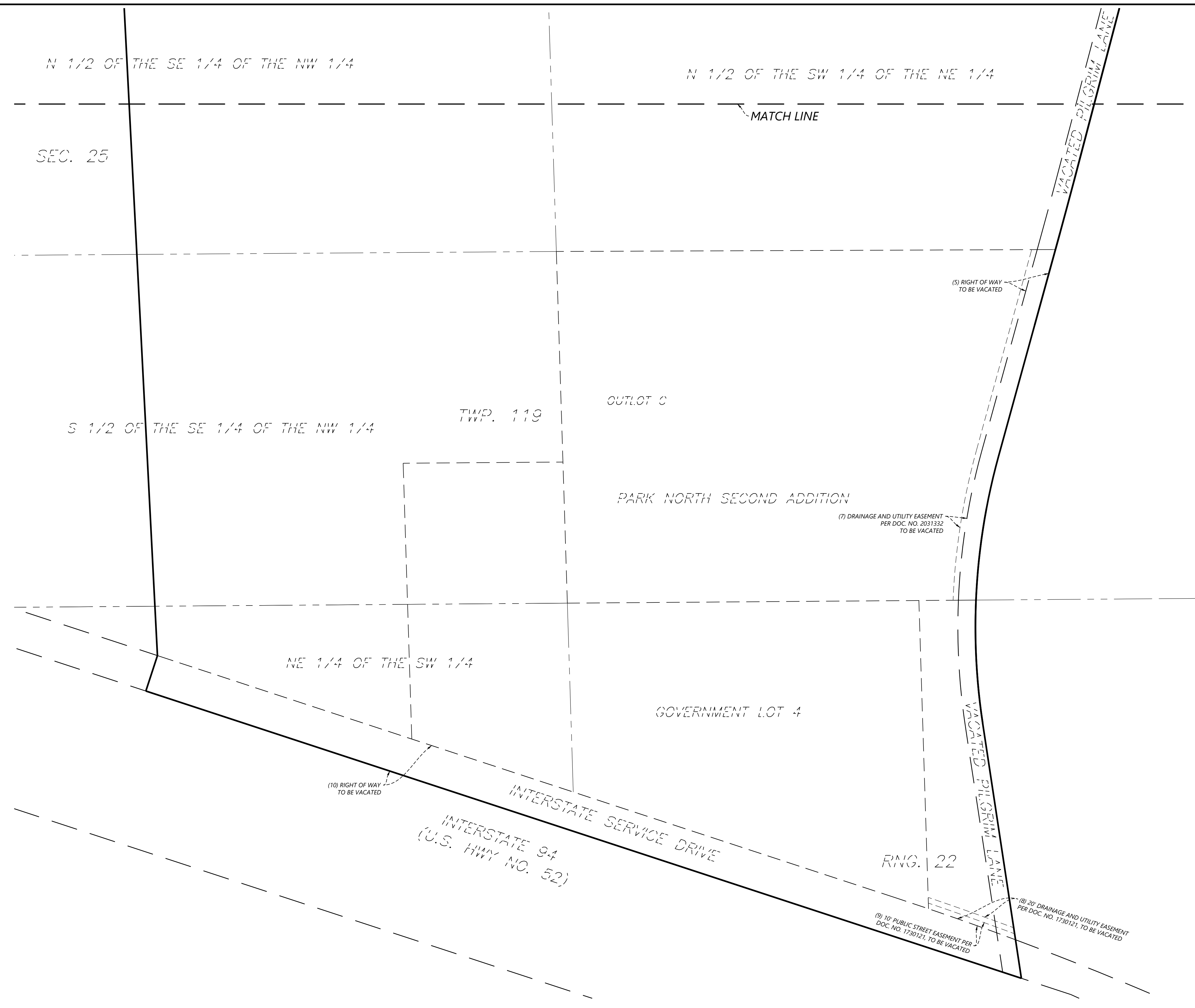
Westwood
 Phone (320) 253-9495 1900 Medical Arts Ave S, Suite 100
 Fax (320) 358-2001 Sartell, MN 56377
 Toll Free (800) 270-9495 westwoodps.com
 Westwood Professional Services, Inc.

VACATION REFERENCE
 SHEET

SHEET NUMBER:
 1 OF 2
 DATE: 07/11/2023

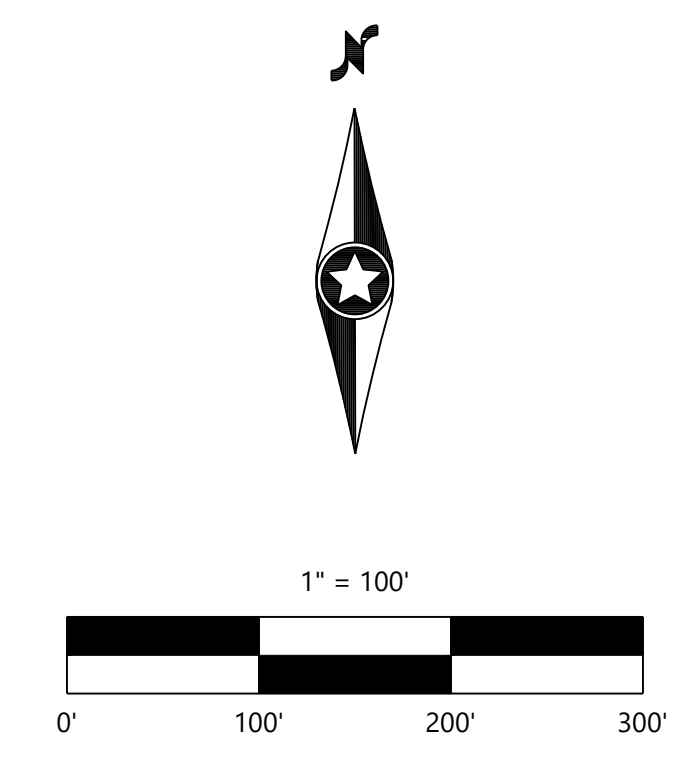
PROJECT NUMBER: 0043826.00

© 2023 Westwood Professional Services, Inc. N:\043826.00\DWG\SURVEY\043826.00-VACATIONS.DWG



- VACATIONS**
- (1) DRAINAGE AND UTILITY EASEMENT PER DOC. NO. 228093
 - (2) DRAINAGE AND UTILITY EASEMENT PER DOC. NO. 2098292
 - (3) DRAINAGE EASEMENT PER DOC. NO. 1517356
 - (4) PUBLIC STREET EASEMENT PER DOC. NO. 2108435 AND 2115065
 - (5) PILGRIM LANE RIGHT OF WAY
 - (6) PUBLIC RIGHT OF WAY EASEMENT PER DOC. NO. 5644929 AND 2089023
 - (7) DRAINAGE AND UTILITY EASEMENT PER DOC. NO. 2031332
 - (8) 20' DRAINAGE AND UTILITY EASEMENT PER DOC. NO. 1730121, TO BE VACATED
 - (9) 10' PUBLIC STREET EASEMENT PER DOC. NO. 1730121, TO BE VACATED
 - (10) INTERSTATE SERVICE DRIVE RIGHT OF WAY

- LEGEND**
- BOUNDARY LINE
 - RIGHT-OF-WAY LINE
 - LOT LINE
 - EASEMENT LINE
 - SECTION LINE



DESIGNED: _____	INITIAL ISSUE: _____
CHECKED: M/JW	REVISIONS: _____
DRAWN: ACW	_____
HORIZONTAL SCALE: 100'	_____

PREPARED FOR:
RYAN COMPANIES US, INC.
 MINNEAPOLIS, MN

C.S. MCCROSSAN SITE
 MAPLE GROVE, MN

Westwood
 Phone (320) 253-9495 1900 Medical Arts Ave S, Suite 100
 Fax (320) 358-2001 Sartell, MN 56377
 Toll Free (800) 270-9495 westwoodps.com
 Westwood Professional Services, Inc.

VACATION REFERENCE SHEET
 PROJECT NUMBER: 0043826.00

SHEET NUMBER:
2 OF **2**
 DATE: 07/11/2023