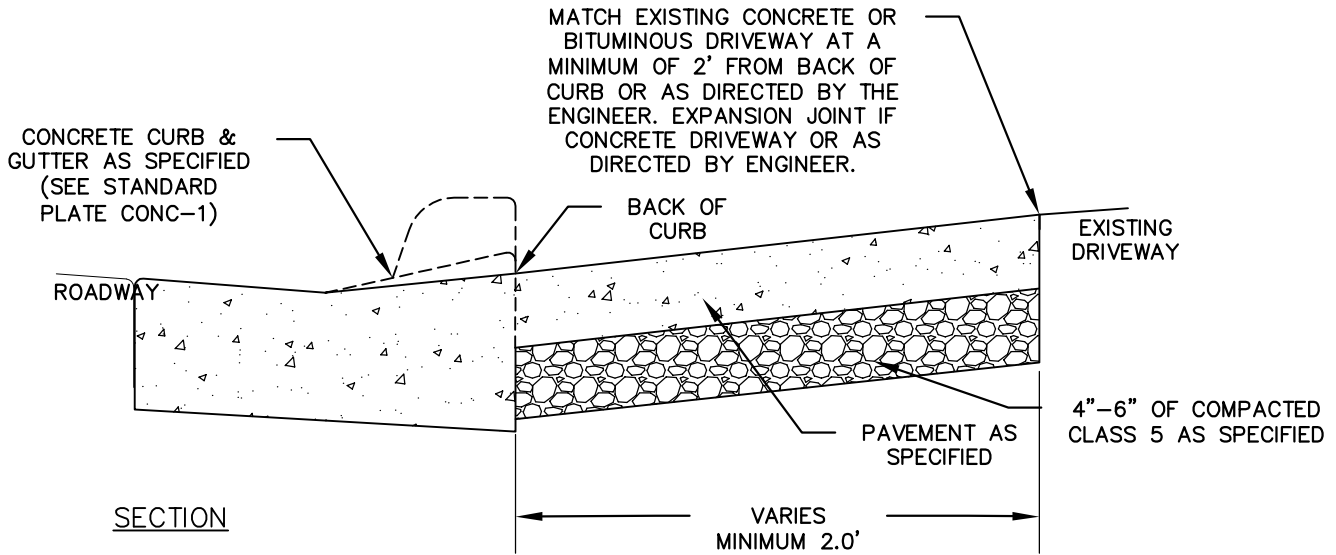
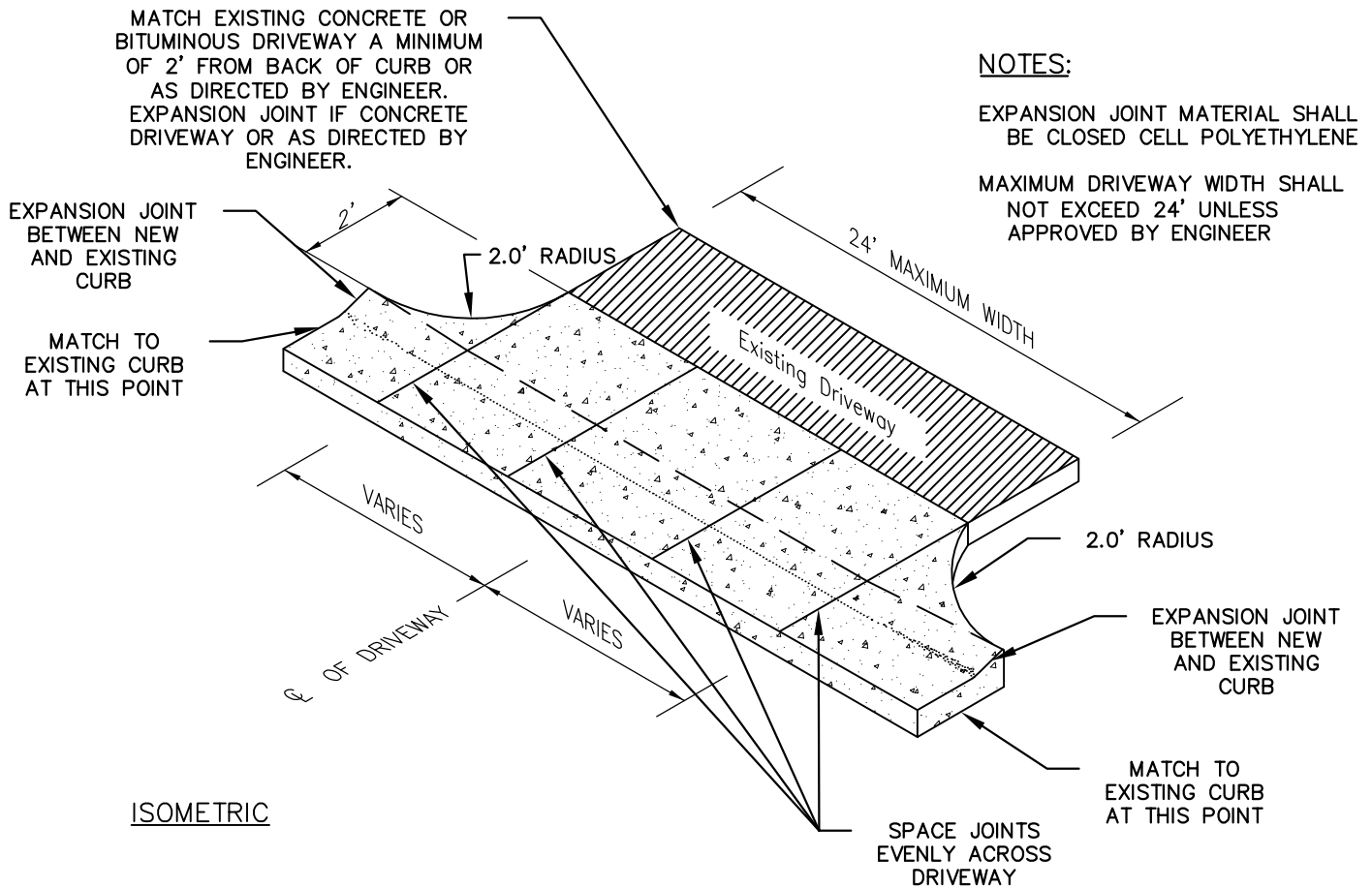


CONCRETE
 6" THICK (RESIDENTIAL) OR
 8" THICK (COMMERCIAL)
 6" OF COMPACTED CLASS 5
 AGGREGATE BASE

BITUMINOUS DRIVEWAY
 3" THICK TYPE SPWEA230B
 4"-6" OF COMPACTED
 CLASS 5 AGGREGATE BASE



SECTION



ISOMETRIC

NOTES:

- EXPANSION JOINT MATERIAL SHALL BE CLOSED CELL POLYETHYLENE
- MAXIMUM DRIVEWAY WIDTH SHALL NOT EXCEED 24' UNLESS APPROVED BY ENGINEER

MAXIMUM DRIVEWAY WIDTH: 34'



LAST REVISION
 JANUARY 2019

**RESIDENTIAL / COMMERCIAL DRIVEWAY
 2' APRON POURED INTEGRALLY**

CITY OF MAPLE GROVE ENGINEERING
 & PUBLIC WORKS DEPARTMENTS

STANDARD
 PLATE #
 CONC-9