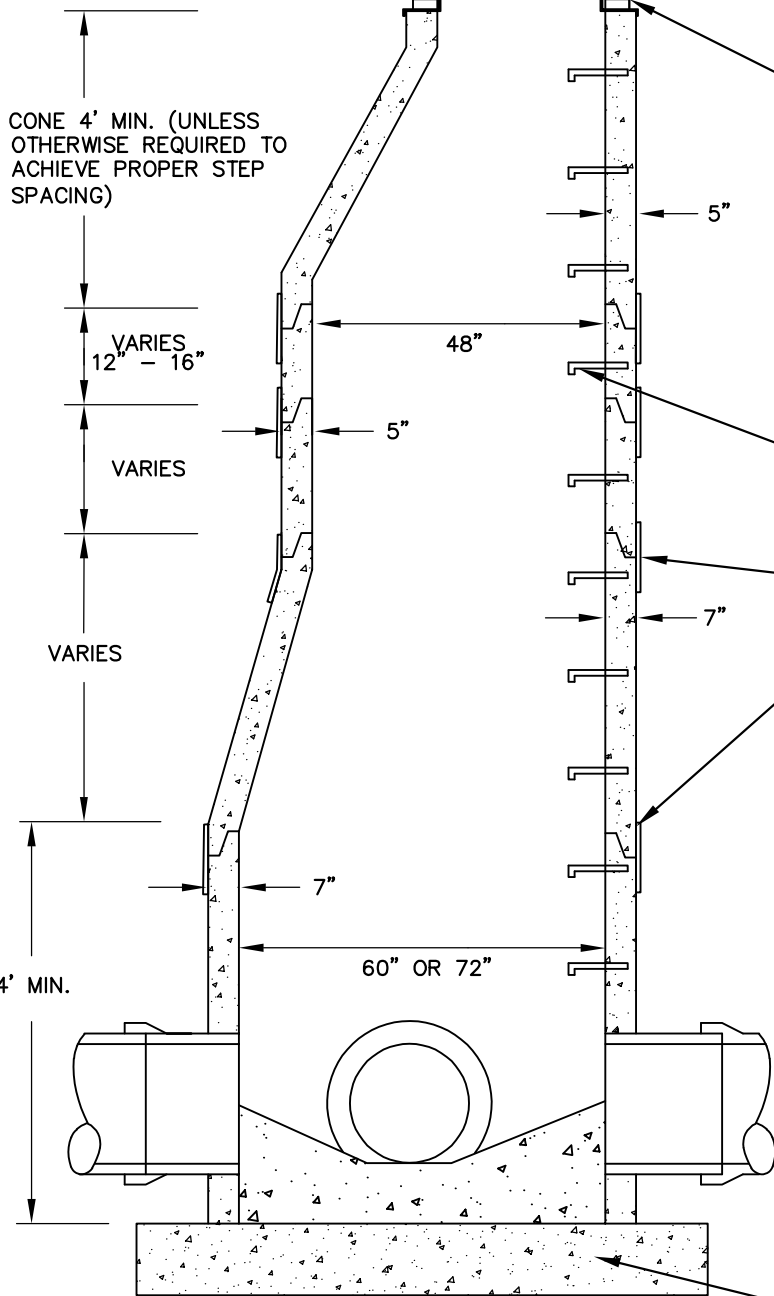


NEENAH MANHOLE FRAME AND CASTING R-1642, SELF SEALING B LID, WITH SOLID COVER AND TWO CONCEALED PICK HOLES OR APPROVED EQUAL. LID SHALL BE LABELED "SANITARY SEWER" WITH 2" RAISED LETTERS



IF USING CONCRETE ADJUSTING RINGS AN ALIGNMENT OR INFLOW & INFILTRATION BARRIER MUST BE INSTALLED AS PER STANDARD PLATE SS-17. CONCRETE ADJUSTMENT RINGS SHALL BE SEALED TO THE CASTING, AND ONE ANOTHER BY USING A PREPACKAGED MOTOR MIX OR MFG SPECIFIED MIX FOR NON-CONCRETE RINGS. TOTAL ADJUSTMENT MINIMUM 4" MAX 14".

MANHOLE STEPS, NEENAH R-1981-N OR APPROVED EQUAL, 16" ON CENTER. COPOLYMER POLYPROPYLENE PLASTIC (PSI-PF) AND ALUMINUM STEPS APPROVED.

JOINTS OF PRECAST SECTIONS SHALL BE WRAPPED IN 20" HEAVY DUTY 80 GAUGE STRETCH WRAP A MINIMUM OF 4 LAYERS.

JOINTS BETWEEN PRECAST SECTIONS SHALL USE PRELUBRICATED PROFILE RUBBER GASKETS CONFORMING TO ASTM C443.

MINIMUM SLAB THICKNESS IS 6" FOR 14' DEPTH. INCREASE THICKNESS 1" FOR EVERY 4' OF DEPTH GREATER THAN 14'. REINFORCE AS PER MN/DOT STD PLATE 4011.

SECTION

NOTES:

ALL WATER TIGHT PIPE CONNECTIONS SHALL CONFORM TO ASTM C923 FOR CONNECTIONS BETWEEN MAINTENANCE HOLE STRUCTURES AND PIPES.

POSITIVE MECHANICAL SEALS SHALL BE KOR-N-SEAL FOR PIPES 24" AND SMALLER. GREATER THAN 24" SHALL BE A-LOK X-CEL.

PRECAST INVERT SHOULD BE 1/2 Ø OF PIPE SLOPED 2" TOWARD INVERT



**REDUCING MANHOLE
78" TO 48" OR 60" TO 48"**

CITY OF MAPLE GROVE ENGINEERING
& PUBLIC WORKS DEPARTMENTS

STANDARD
PLATE #
SS-10

LAST REVISION
JANUARY 2021