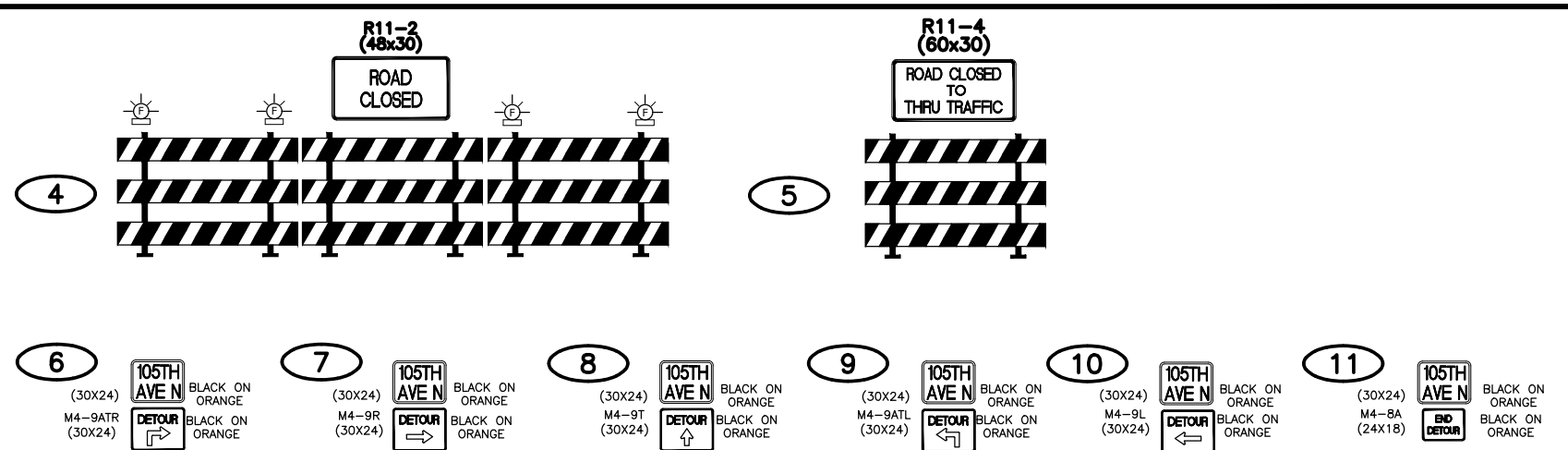
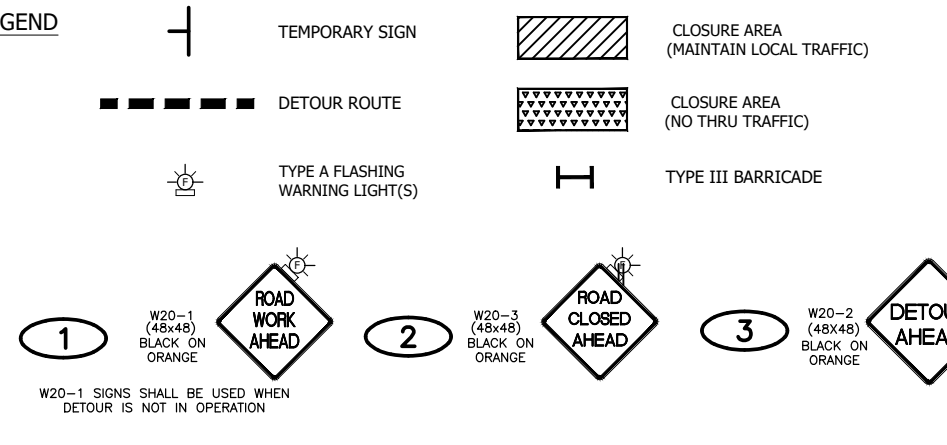


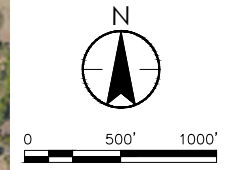
THE CONTRACTOR SHALL VERIFY AND BE RESPONSIBLE FOR ALL DIMENSIONS. DO NOT SCALE THE DRAWING. ANY ERRORS OR OMISSIONS SHALL BE REPORTED TO STANTEC WITHOUT DELAY. STANTEC SHALL BE RESPONSIBLE FOR THE DESIGN AND CONSTRUCTION OF THE TRAFFIC CONTROL PLAN. NO USE FOR ANY PURPOSE OTHER THAN THAT AUTHORIZED BY STANTEC IS FORBIDDEN.  
 Plot Date: 03/16/2022 - 12:33pm  
 Drawing Name: C:\new\_sln\_bk\_in\info\193805396\_1901.dwg  
 Xref(s): 193805396\_BORDER, 193805396\_XSITE, 193805396\_Background, Other

**LEGEND**



**- GENERAL NOTES -**

- PAYMENT FOR TRAFFIC CONTROL IS INTENDED TO COVER SUCH DEVICES AS SHOWN IN THE FIELD MANUAL FOR TEMPORARY TRAFFIC CONTROL ZONE LAYOUTS.
- LAYOUT SHOWN IS AN EXAMPLE. CONTRACTOR MAY ADJUST SIGN PLACEMENT ACCORDING TO CONSTRUCTION STAGING AND HENNEPIN COUNTY PERMIT REQUIREMENTS.
- CUSTOM SIGNS SHALL BE SIZED TO ALLOW FOR 6-INCH LETTER SIZES.
- ALL TRAFFIC CONTROL DEVICES AND SIGNING SHALL CONFORM TO THE MnMUTCD, INCLUDING THE FIELD MANUAL FOR TEMPORARY TRAFFIC CONTROL ZONE LAYOUTS.
- THE CONTRACTOR SHALL FURNISH, INSTALL, AND MAINTAIN THE DEVICES IN THE TRAFFIC CONTROL PLAN UNLESS OTHERWISE NOTED.
- FIELD CONDITIONS MAY REQUIRE MODIFICATIONS OF THIS LAYOUT AS DEEMED NECESSARY BY THE ENGINEER.
- THE CONTRACTOR IS RESPONSIBLE FOR PROTECTING ANY WORK AREAS NEAR TRAFFIC IN ACCORDANCE WITH THE MnMUTCD.
- ALL LOCATIONS IN THE TRAFFIC CONTROL PLAN ARE APPROXIMATE. COORDINATE INSTALLATION WITH ENGINEER IN FIELD.
- INSTALLATION DETAILS OF SIGNS ON BARRICADES SHALL BE APPROVED BY THE ENGINEER PRIOR TO PLACEMENT.
- SIGNS SHALL BE MOUNTED ON POSTS DRIVEN INTO THE GROUND AT PROPER HEIGHT AND LATERAL OFFSET AS DETAILED IN THE MnMUTCD. SIGNS MAY ALSO BE MOUNTED ON PORTABLE SUPPORTS 5-7 FT. HIGH, AS APPROVED BY THE ENGINEER. WHEN SIGNS ARE REMOVED, THE SIGN POSTS SHALL BE REMOVED AS SOON AS POSSIBLE.
- ALL TRAFFIC CONTROL DEVICES, INCLUDING OVERHEAD SIGNS ON ROADS OPEN TO TRAFFIC THAT ARE NOT CONSISTENT WITH TRAFFIC OPERATIONS SHALL BE COVERED, REMOVED, OR REVISED AS DIRECTED BY THE ENGINEER.
- ALL WARNING SIGNS SHALL BE MADE OF DIAMOND GRADE ORANGE REFLECTIVE SHEETING (3984 SERIES) OR AN APPROVED SUBSTITUTE. ALL REGULATORY SIGNS SHALL BE V.I.P. DIAMOND GRADE (3990 SERIES) SHEETING.
- BARRICADES SHALL BE TYPE III AND SHALL BE CONSTRUCTED OF LIGHT MATERIAL. THE ACTUAL NUMBER OF BARRICADES AT EACH LOCATION REQUIRED MAY VARY DEPENDING ON THE SIZE OF THE BARRICADE USED.
- THE CONTRACTOR SHALL COORDINATE THE REMOVAL OF THE TEMPORARY SIGNS.
- ALL SIGNS PROVIDED BY THE CONTRACTOR FOR TRAFFIC CONTROL DURING CONSTRUCTION SHALL REMAIN THE PROPERTY OF THE CONTRACTOR AND SHALL BE REMOVED FROM THE JOB SITE WHEN THEY ARE NO LONGER NEEDED.
- ALL SIGN POSTS SHALL BE REMOVED AND THE SURROUNDING GROUND RETURNED TO ITS ORIGINAL CONDITION WHEN THEY ARE NO LONGER NEEDED.
- ONCE PERMIT IS RECEIVED, THE CONTRACTOR MUST GIVE 48 HOURS NOTICE TO HENNEPIN COUNTY PERMITS OFFICE PRIOR TO ANY TRAFFIC CONTROL SIGNS BEING PLACED.



**Stantec**  
 733 Marquette Avenue, Suite 1000  
 Minneapolis, MN 55402  
 www.stantec.com

DATE: 12/16/2021 I.C. NO.: 51774

PRINT NAME: TYLER J. MCLEETE  
 SIGNATURE: [Signature]  
 I hereby certify that this plan, specification, or report was prepared by me or under my direct supervision and that I am a duly licensed professional engineer under the laws of the state of Minnesota.

CITY OF MAPLE GROVE, MINNESOTA  
 NORTHWOOD CHURCH/WESTON COMMONS  
 STREET AND UTILITY IMPROVEMENTS - CITY PROJECT NO. 21-16  
 TRAFFIC CONTROL PLAN

NO	REVISION	DATE

SURVEY: TNA  
 DRAWN: JLT/ASB  
 DESIGNED: JLT/ASB  
 CHECKED: TJM  
 APPROVED: TJM  
 PROJ. NO.: 193805396  
 SHEET NUMBER: 19.01